



## El Dorado County Fire Protection District



### *Station 25 Run Statistics November 2024*

#### **ENGINE 25: 265 Total Calls**

Medical Aid- 182  
Fire- 10  
Traffic Collision- 19  
Public Assist - 21  
Misc. – 20  
Move/Cover– 5

#### **MEDIC 25: 248 Total Calls**

Medical Aid- 220  
Fire- 5  
Traffic Collision- 20  
Transfer -9  
Misc.- 3  
Move/Cover - 22





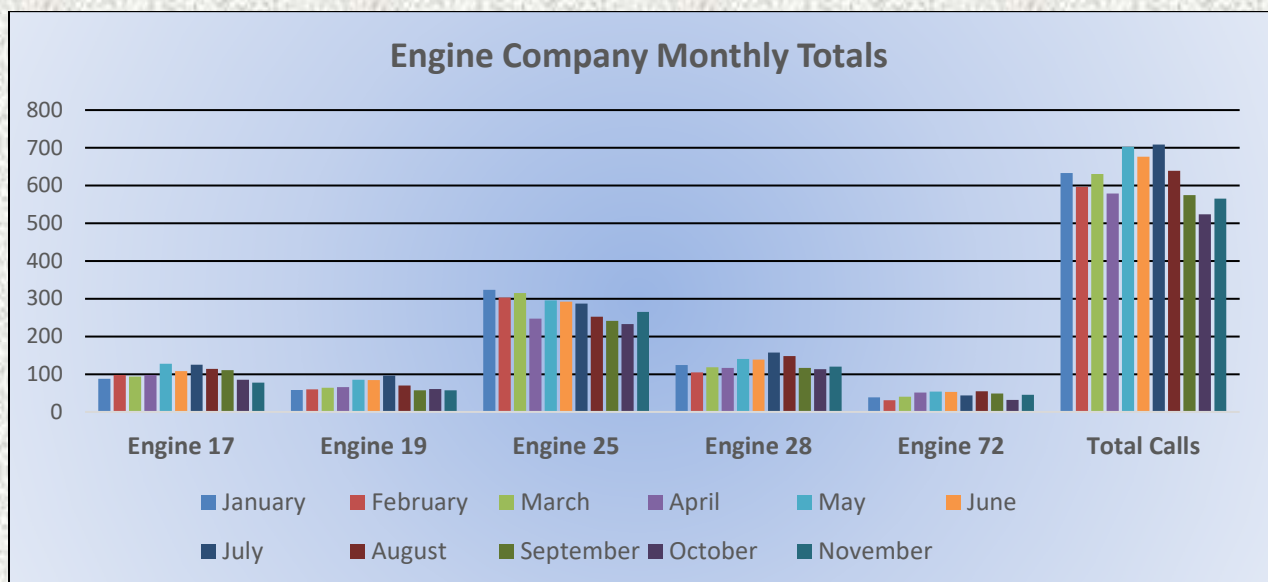
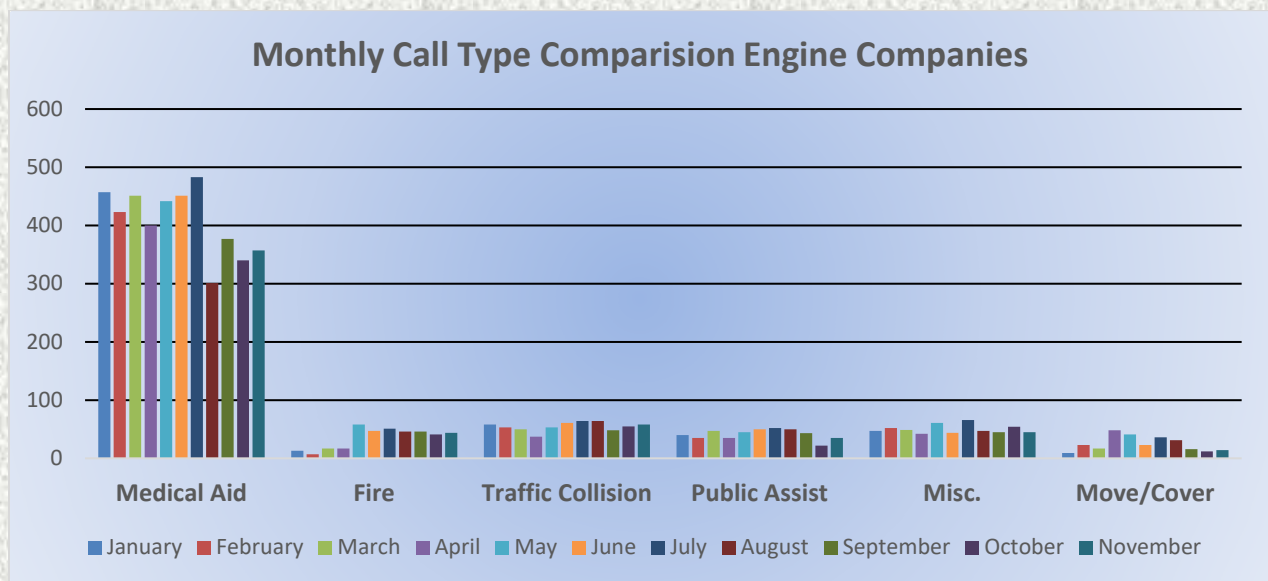


## El Dorado County Fire Protection District



### Monthly Run Statistics and Call Break Down November 2024 Engine Companies and Medic Units

Total Responses for Engine Companies: 565

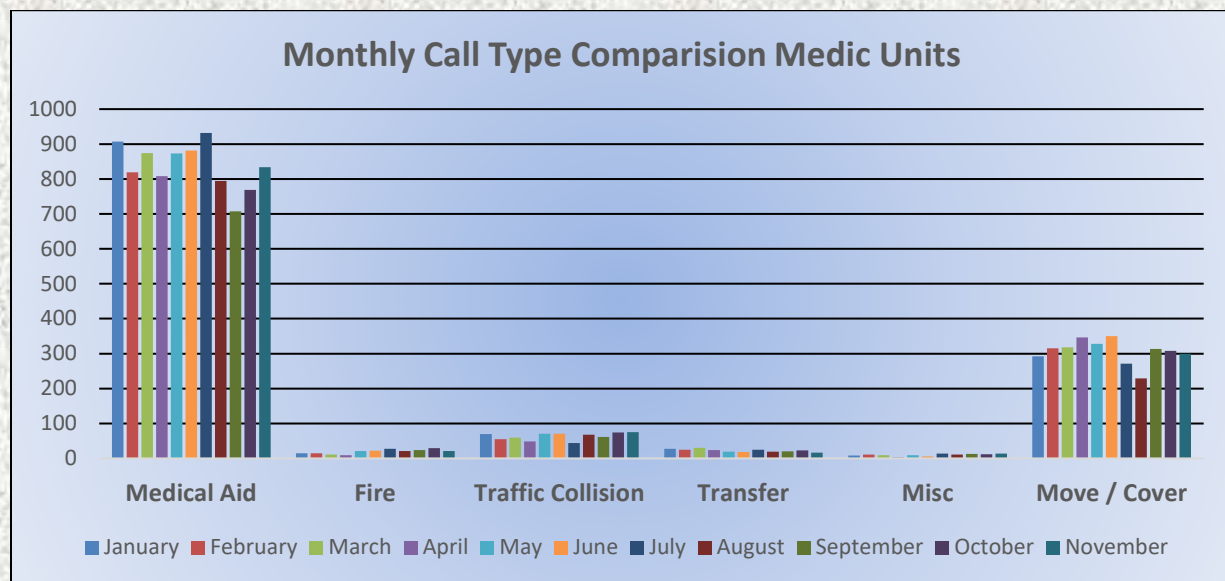
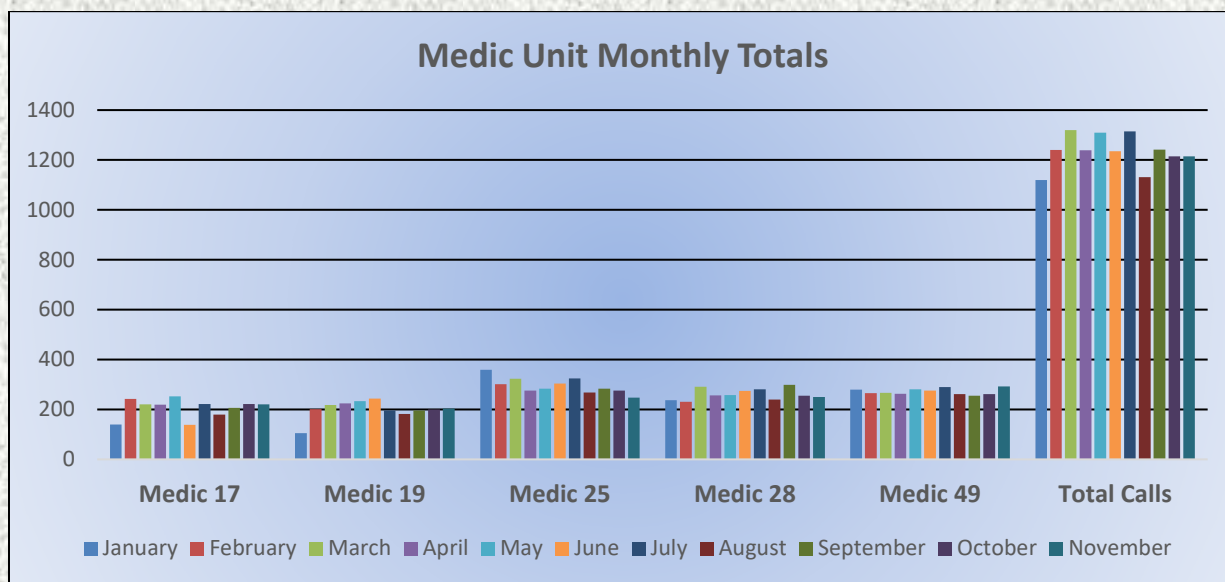


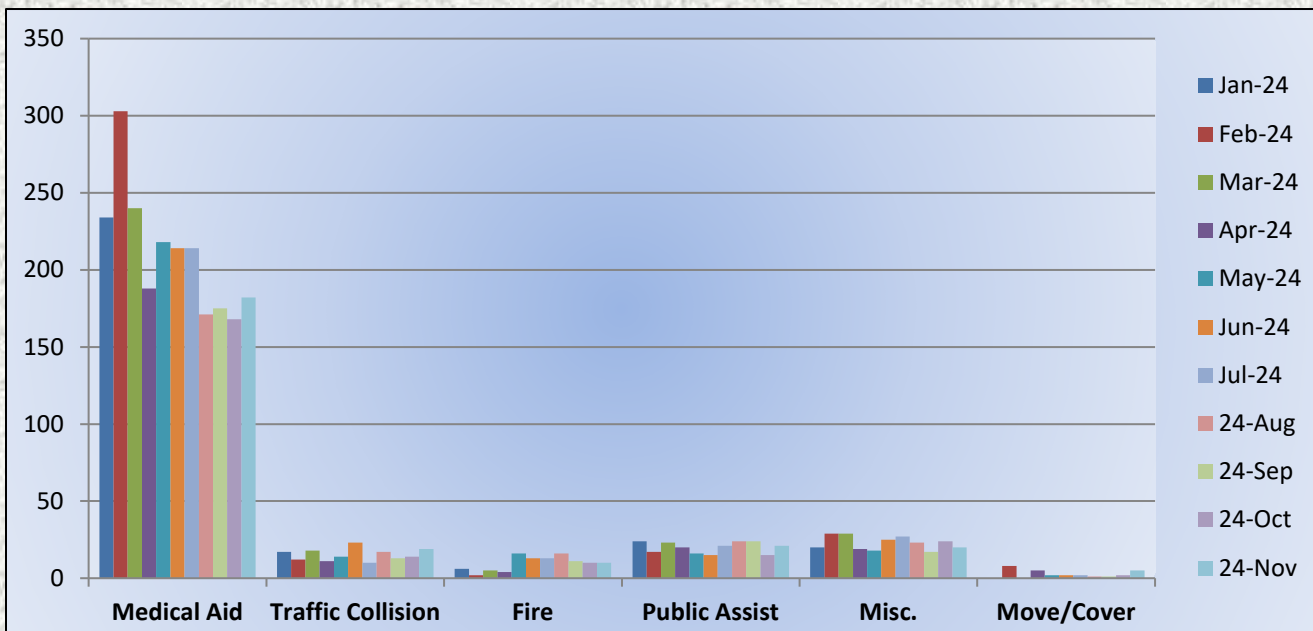


## El Dorado County Fire Protection District



Total Responses for Medic Units: 1,215









## Medic 25 Monthly Statistics Comparison

